

## Test Case-38

**Test Name:** RJIL-IP-QA-DS-SYS-039

**Test Objective:** To check Multiple Privilege Levels support to provide different levels of access

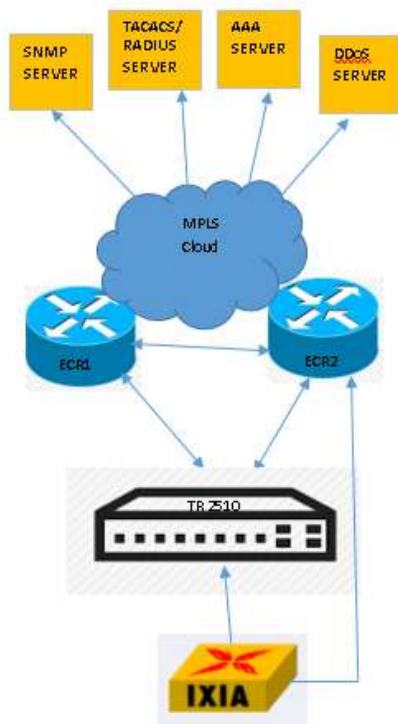
**Test Configuration:**

```
aaa authentication login default local
aaa authentication enable default enable
aaa authorization exec default local
```

```
username test1 password 7 admin1
enable password 0 read privilege level 7
enable password 0 write privilege level 15
```

!

**Test Set up (Including Pre requisites):** Switch, ECR1, ECR2



**Procedure:** Configure the switch with different access level using the above config

**Action:** Configured user test1 with both read and write privilege level.

Response: when asked for enable password if we use read privilege level (level 7 ) password than only show command should work. And if entered write access privilege level password ( level 15) than user should able to enter config mode.

**Expected Result:** user should get privilege according to the enable password privilege level given.

**Actual Result:**

```
[vendor@ANSIBLE ~]$ ssh test1@10.64.89.228
test1@10.64.89.228's password:

Welcome to Techroutes TR S2510POE-DC Ethernet Switch

GUICHECK>enable 7
password:
GUICHECK#config
config
^
Unknown command
GUICHECK#exit
GUICHECK>enable 15
password:
GUICHECK#config
GUICHECK_config#
```

## Test Case-39

**Test Name:** RJIL-IP-QA-DS-SYS-040

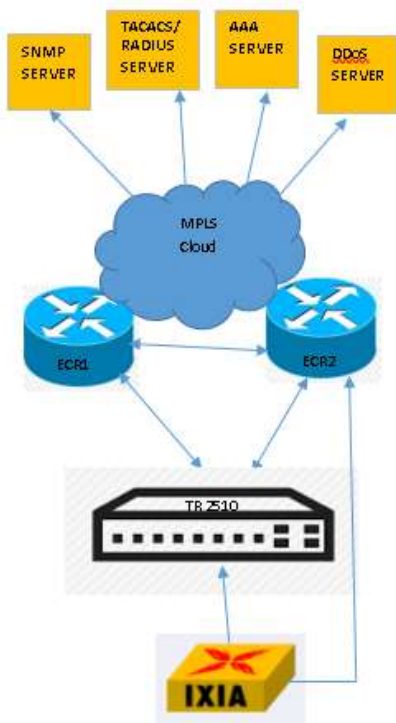
**Test Objective:** To check support for password encryption.

### Test Configuration:

Service password-encryption

!

**Test Set up (Including Pre requisites):** Switch , ECR1,ECR2



**Procedure:** Connect Switch to the ECR1, ECR2

**Action:**

**Response:**